

Eureka Mill Site

City of Chester, Chester County, South Carolina
 USGS 1:24,000 Topographic Map

Drawn By: SPP	Date: 5-12-25	Rev.
Project Mgr. SPP	Scale: 1:24,000	Sheet: 1

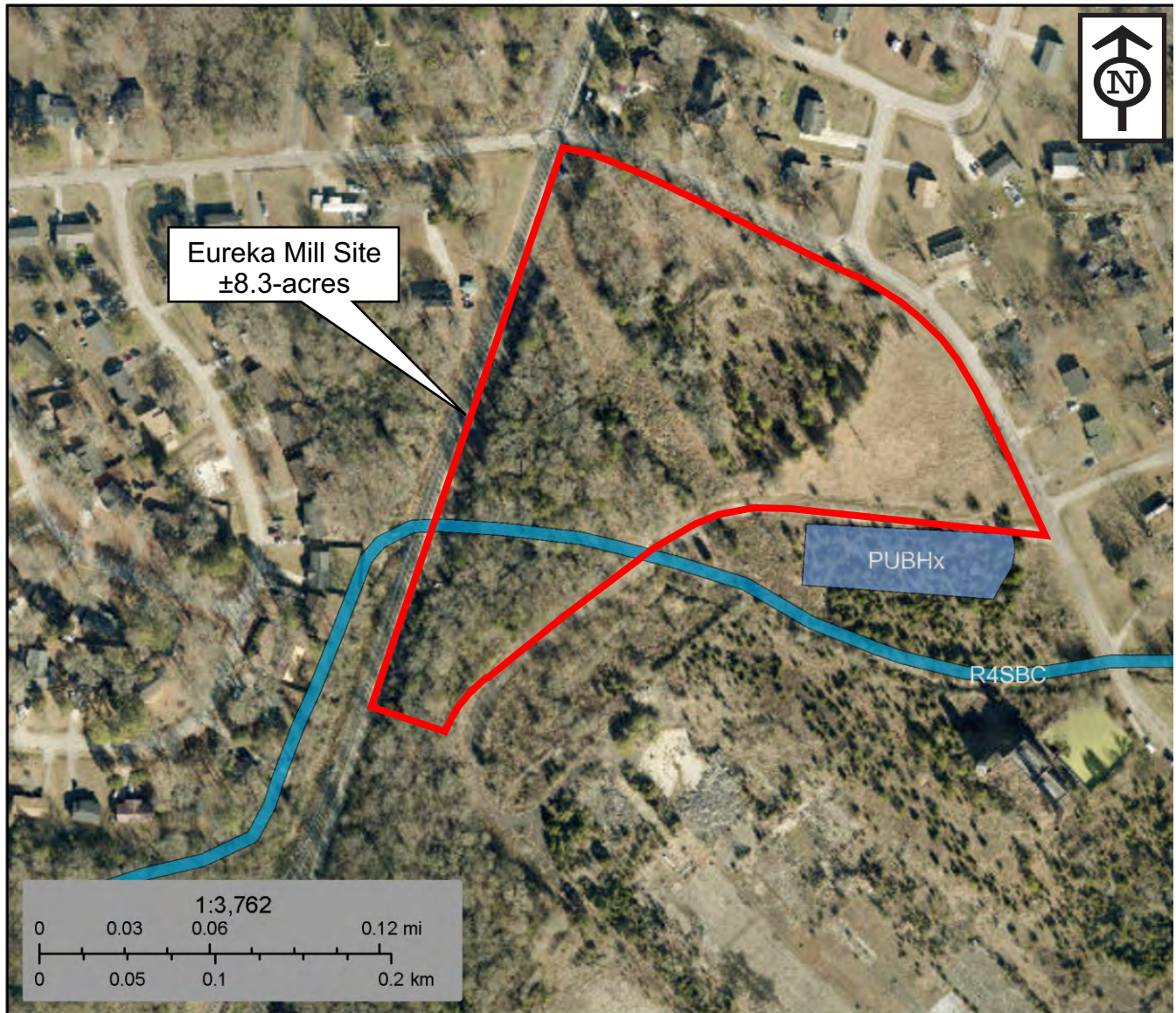
Lowrys Environmental & Ecological Services, LLC

1823 Quinn Road
 Chester, South Carolina 29706
 803-992-0910



U.S. Fish and Wildlife Service
National Wetlands Inventory

Wetlands



May 12, 2025

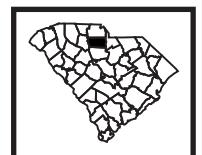
Wetlands

- Estuarine and Marine Deepwater
- Estuarine and Marine Wetland

- Freshwater Emergent Wetland
- Freshwater Forested/Shrub Wetland
- Freshwater Pond

- Lake
- Other
- Riverine

Eureka Mill Site
Scale: As Shown
Source: USFWS NWI Mapper (2025)
Disclaimer: The information depicted on this figure is for informational purposes only and was not prepared for, and is not suitable for legal or engineering purposes.



Eureka Mill Site
City of Chester, Chester County, South Carolina
USFWS National Wetlands Inventory Map

Drawn By: SPP	Date: 5-12-25	Rev.
Project Mgr. SPP	Scale: As Shown	Sheet: 2

**Lowrys Environmental &
Ecological Services, LLC**
1823 Quinn Road
Chester, South Carolina 29706
803-992-0910

SOILS LEGEND

IdB Iredell Fine Sandy Loam 1-6% Slope



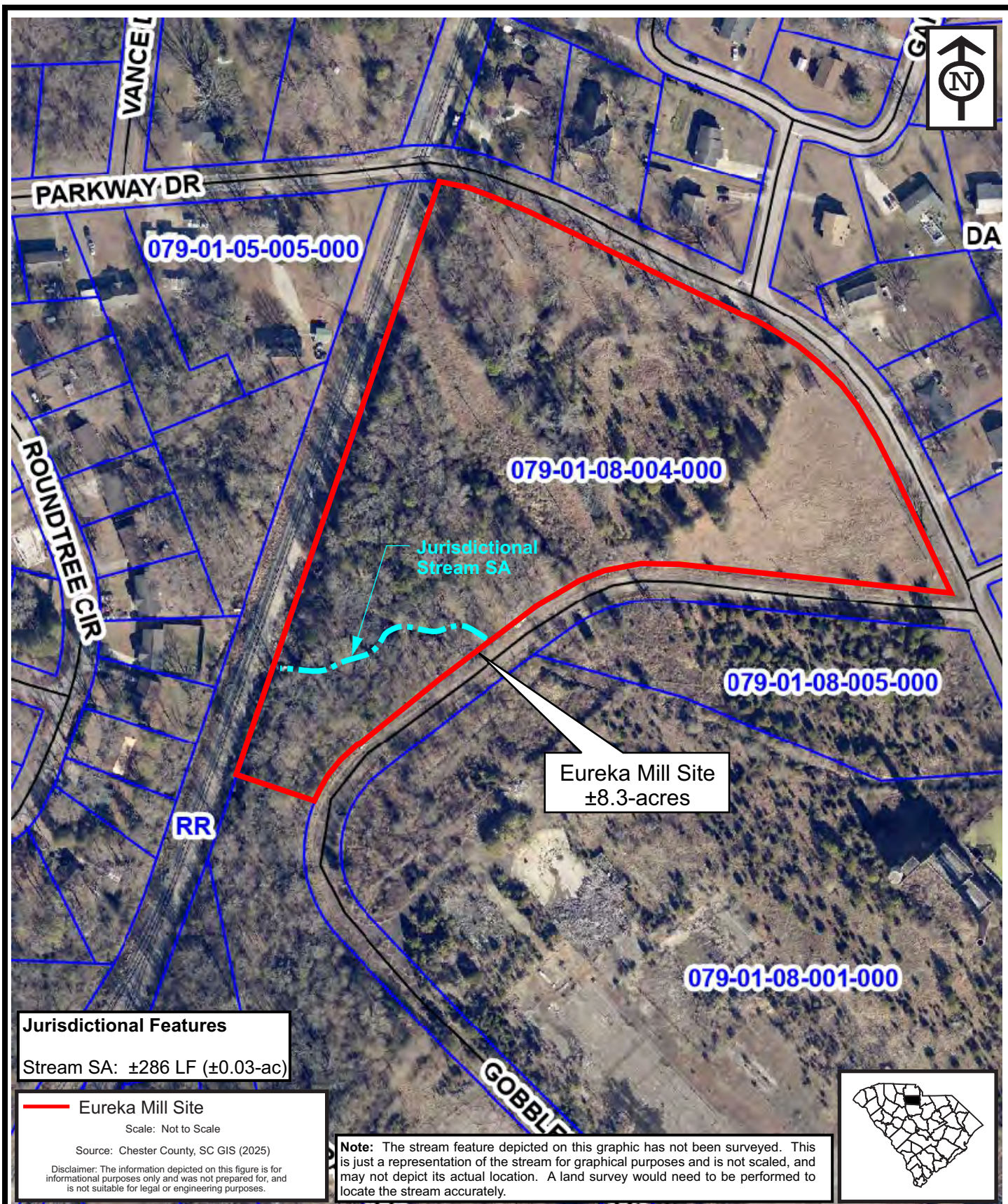
Eureka Mill Site

City of Chester, Chester County, South Carolina
USDA NRCS Soil Survey Map

Drawn By: SPP	Date: 5-12-25	Rev.
Project Mgr. SPP	Scale: 1:12,000	Sheet: 3

Lowrys Environmental & Ecological Services, LLC

1823 Quinn Road
Chester, South Carolina 29706
803-992-0910



Eureka Mill Site

City of Chester, Chester County, South Carolina
Delineation Concurrence Map

Drawn By: SPP	Date: 5-12-25	Rev.
Project Mgr. SPP	Scale: Not to Scale	Sheet: 4

Lowrys Environmental &
Ecological Services, LLC
1823 Quinn Road
Chester, South Carolina 29706
803-992-0910